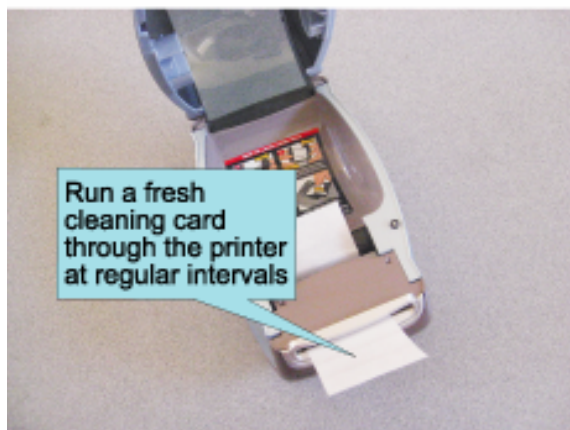
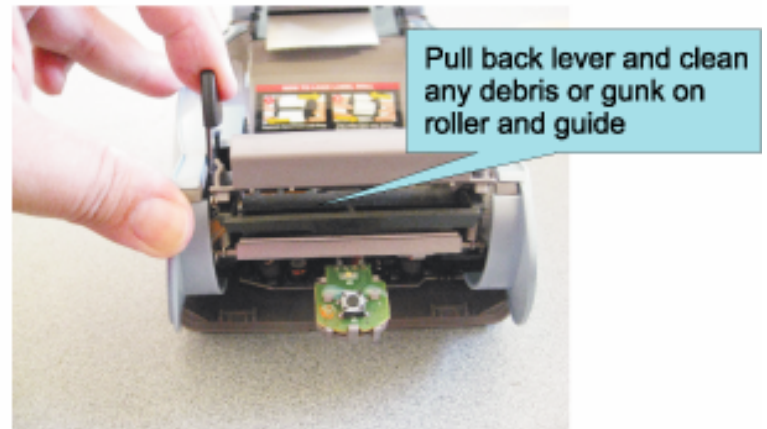
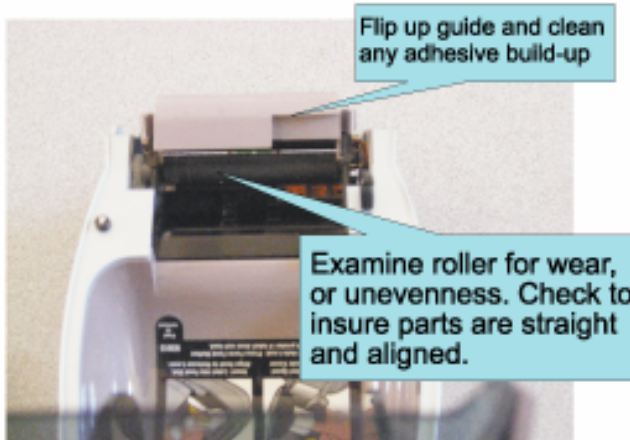
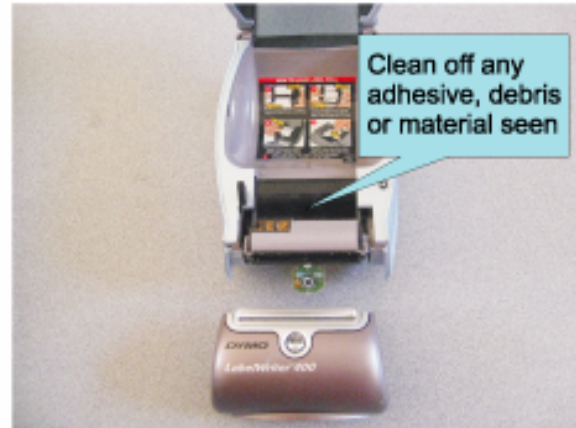
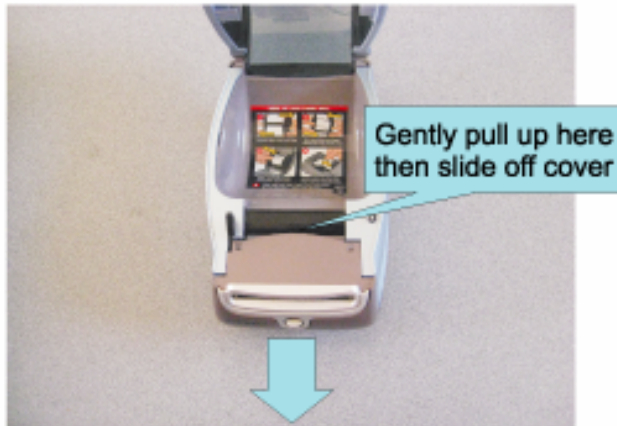


# DuraReady labels require regular Maintenance and Cleaning of your Labelwriter printer



Are ribbons shedding and jamming in your printer?  
The most common causes are a dirty or worn-out printer.  
Perform these cleaning/inspection steps to fix this problem.



**Use a printer cleaning card from Dymo or other source to remove gunk deposited along the printing pathway.**



**Use a new card monthly or more frequently with high printing volumes.**

Google "dymo cleaning card" to find resellers